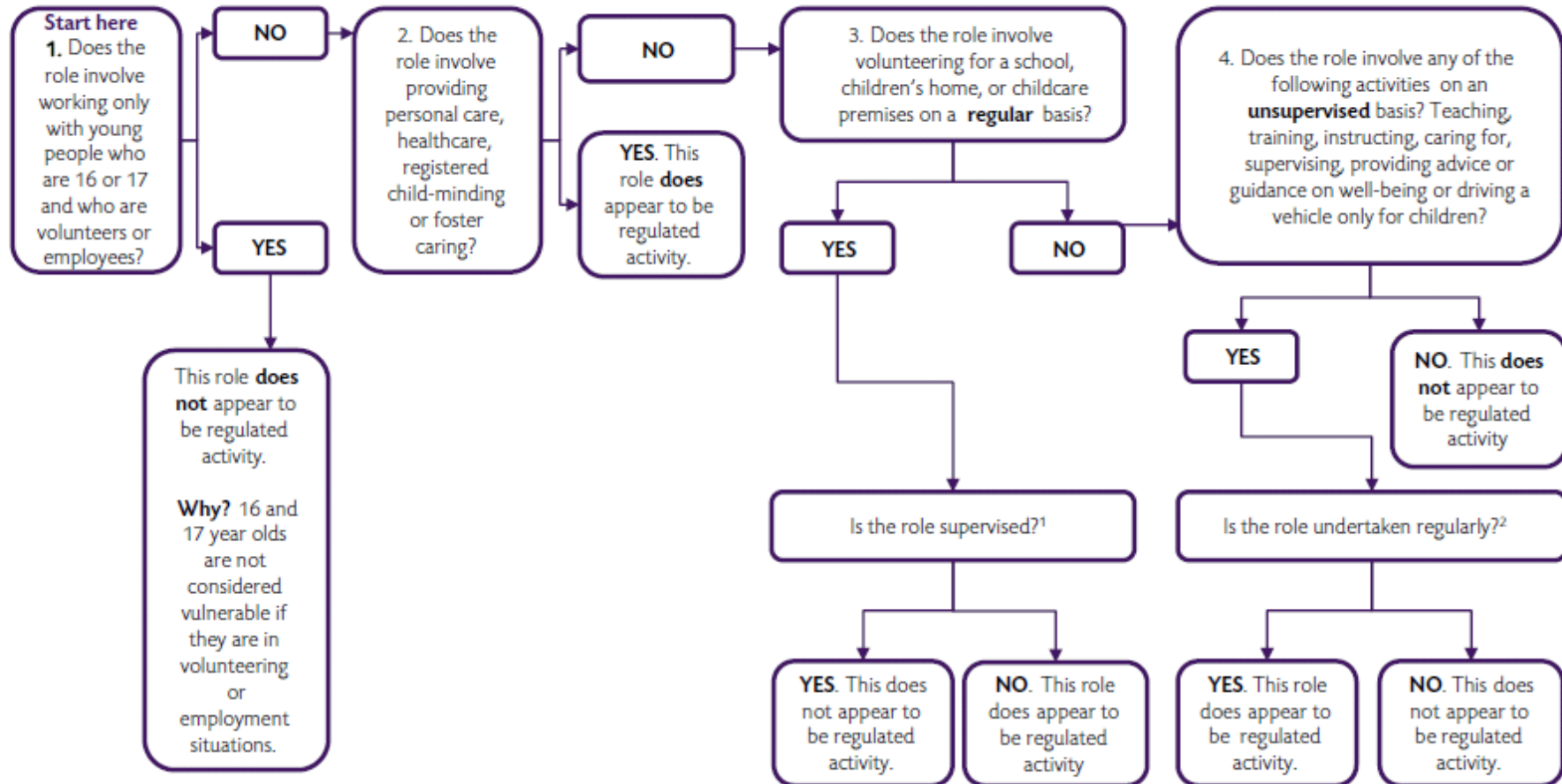


Appendix A: Regulated Activity relating to children and young people

Important: this chart does not apply to family arrangements and personal non-commercial arrangements (these are not covered by the DBS system) and should be read in conjunction with the full guidance from the Department for Education, available via www.education.gov.uk/childrenandyoungpeople/safeguardingchildren/a00209802/disclosure-barring



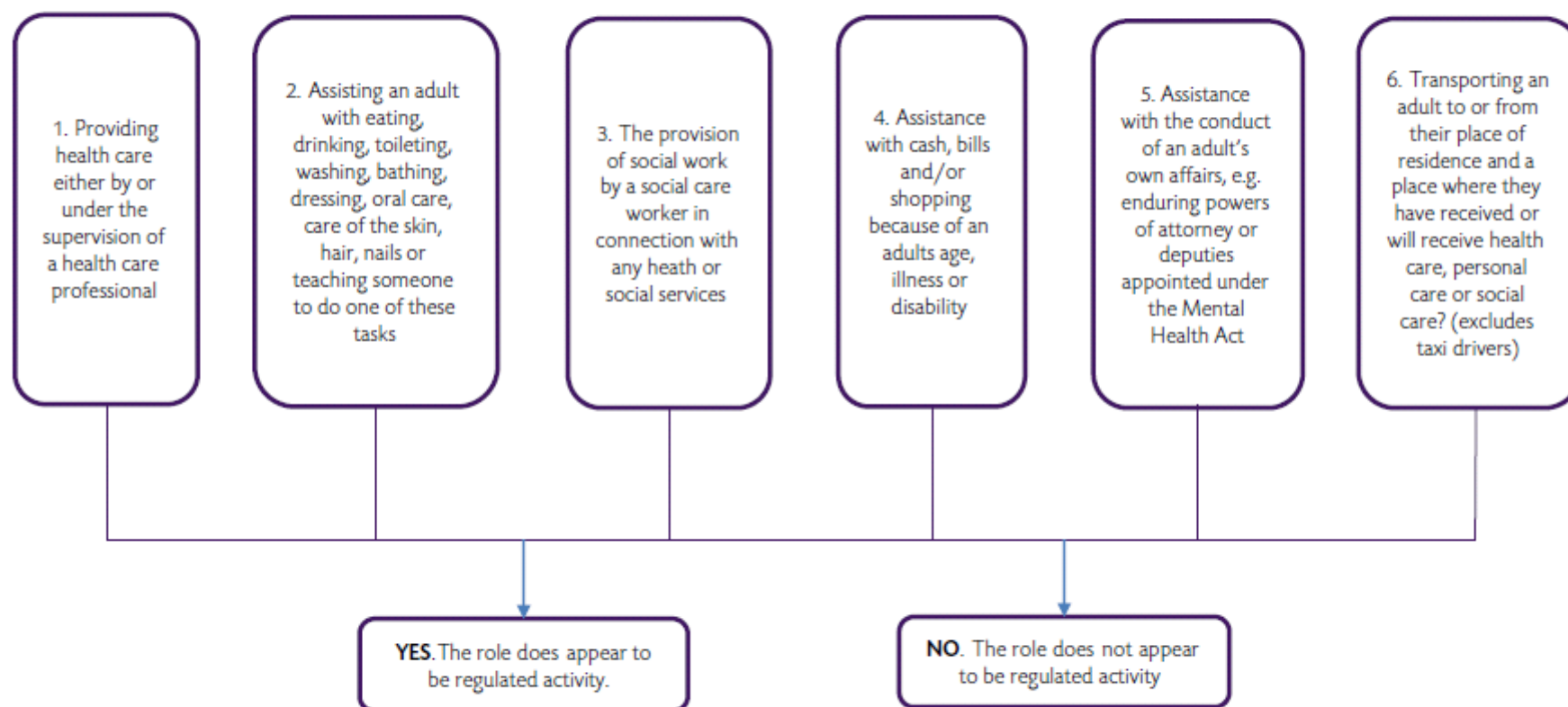
¹ Supervised means regular supervision by someone who themselves is in Regulated Activity. See the Department for Education’s guidance on supervision, available via www.education.gov.uk/childrenandyoungpeople/safeguardingchildren/a00209802/disclosure-barring

² Regular means carried out by the same person frequently (once a week or more) or on four or more days in a 30-day period (or in some cases overnight).

Appendix B: Regulated Activity relating to adults

Important: this chart does not apply to family arrangements and personal non-commercial arrangements (these are not covered by the DBS system) and should be read in conjunction with the full guidance from the Department for Education, available via www.education.gov.uk/childrenandyoungpeople/safeguardingchildren/a00209802/disclosure-barring

Does the role involve any of the following activities?



Note – Anyone who provides day-to-day management or supervision of persons involved in these activities are in Regulated Activity.